

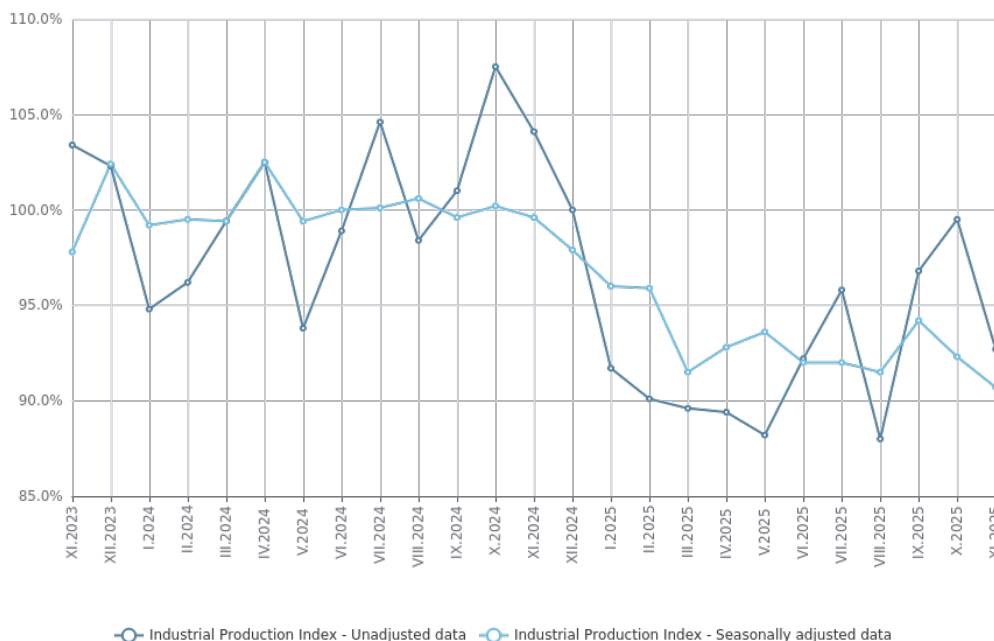


INDUSTRIAL PRODUCTION INDICES - NOVEMBER 2025

The Industrial Production Index decreased by 1.7% in November 2025 compared to the previous month. The data are preliminary and seasonally adjusted.

In comparison with November 2024, a decline of 9.3% was registered in the calendar-adjusted Industrial Production Index.

Figure 1. Industrial Production Indices (2021 = 100)



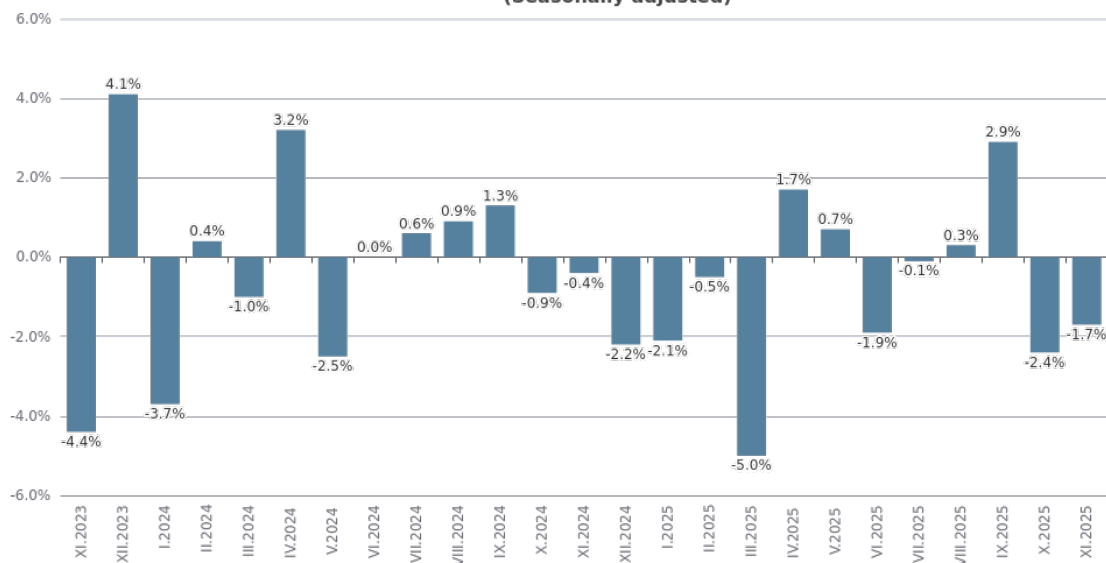
Monthly changes

In November 2025, compared to the previous month, a decrease was seen in the electricity, gas, steam and air conditioning supply - by 35.7%, while a rise was registered in the mining and quarrying industry - by 23.0%, and in the manufacturing - by 0.8%.

More significant rise in the manufacturing was registered in the manufacture of electrical equipment - by 12.2%, in the repair and installation of machinery and equipment - by 11.9%, and in the manufacture of wood and of products of wood and cork, except furniture; manufacture of articles of straw and plaiting materials - by 9.1%.

In the manufacturing, a decrease was reported in the manufacture of other transport equipment - by 15.8%, in the manufacture of fabricated metal products, except machinery and equipment - by 9.3%, and in the other manufacturing - by 9.1%.

Figure 2. Changes of Industrial Production Indices compared to the previous month (Seasonally adjusted)

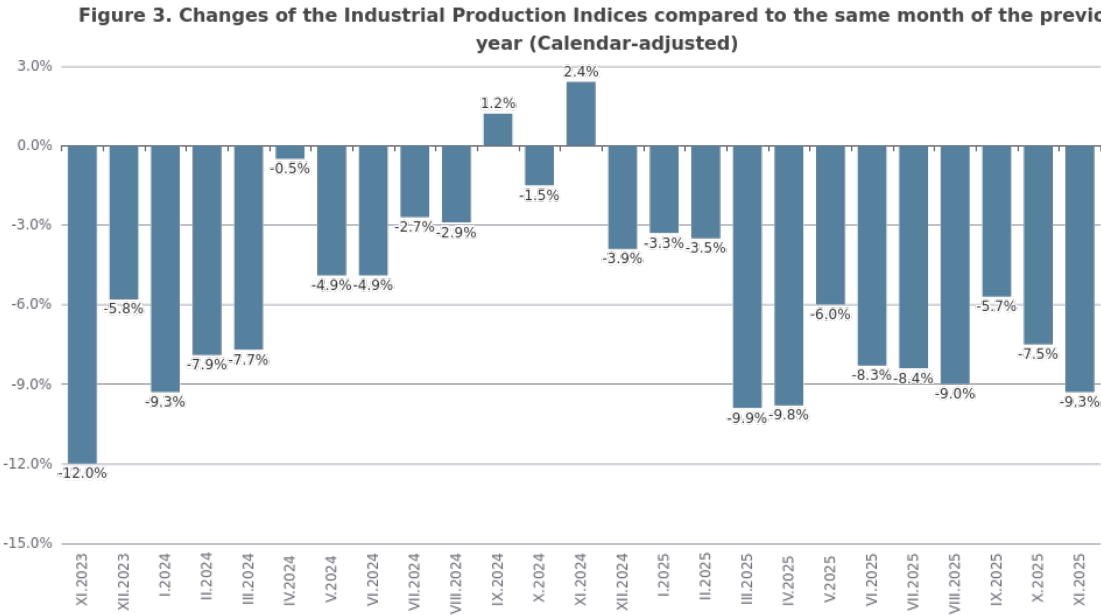


Annual changes

On an annual basis, a drop of the Industrial Production Index was observed in the electricity, gas, steam and air conditioning supply - by 43.7%, in the manufacturing - by 4.7%, while a rise was registered in the mining and quarrying industry - by 12.5%.

In the manufacturing, a significant decline in production, compared to the same month of the previous year, was seen in the manufacture of wearing apparel - by 23.9%, in the manufacture of paper and paper products - by 20.2%, in the manufacture of other transport equipment - by 17.7%, in the manufacture of chemicals and chemical products - by 17.2%.

A rise was reported in the manufacture of tobacco products - by 32.9%, in the manufacture of furniture - by 24.2%, and in the manufacture of basic pharmaceutical products and pharmaceutical preparations - by 17.0%.



Methodological notes

The monthly indices of industrial production are calculated in accordance with the requirements of Regulation (EU) 2019/2152 of the European Parliament and of the Council on European Business Statistics.

The Monthly Industrial Production and Industrial Turnover Indices measure changes in production and turnover values of industrial enterprises. This information can be used to access the current economic development and for short-term forecasts. Indices do not measure the actual production level; they aim to measure the average change in the value of production between two points in time. Indices are compiled based on information collected through a representative sampling survey on industrial enterprises. The sample covers enterprises with an annual turnover of more than 97% of the total turnover in the industry.

The Industrial Production Indices are calculated at a constant base year, that is to say they are weighted with the structure of the value added at factor costs in the base year.

Seasonal adjustment is a statistical method which eliminates the seasonal component of the time series.

Calendar adjustment is an adjustment for variations in the monthly data, caused by calendar effects, the different number of calendar and working days in the months, national holidays and outliers (for example, the presence of more non-working days in May could contribute to the decline in production in some activities).

Since July 2024, all dynamic rows have been recalculated based on 2021 as base year.

Table 1

Changes of Industrial Production Indices compared to the previous month							
							(Per cent)
Economic activities	NACE.BG - 2008	VI.2025	VII.2025	VIII.2025	IX.2025	X.2025	XI.2025*
Industry	B_TO_E36	-1.9	-0.1	0.3	2.9	-2.4	-1.7
Mining and quarrying	B	16.1	-11.3	8.7	-4.2	-13.0	23.0
Mining of coal and lignite	B05	28.5	-25.3	-13.8	-68.1	65.2	36.7
Extraction of crude petroleum and natural gas	B06
Mining of metal ores	B07	14.9	-3.5	3.8	3.4	-5.5	8.3
Other mining and quarrying	B08	-3.6	4.2	3.8	-3.8	-7.1	8.2
Mining support service activities	B09
Manufacturing	C	-2.3	2.0	0.6	2.1	-3.4	0.8
Manufacture of food products	C10	-3.0	1.3	-0.4	-4.9	-0.8	6.3
Manufacture of beverages	C11	-0.9	-3.7	-0.5	1.7	-3.4	8.1
Manufacture of tobacco products	C12	-2.9	-6.7	-5.1	17.9	-17.5	5.7
Manufacture of textiles	C13	-7.4	15.0	-4.5	-7.7	6.4	0.9
Manufacture of wearing apparel	C14	7.2	-8.5	-1.3	0.5	4.4	-5.2
Manufacture of leather and related products	C15	-3.0	-8.8	10.9	7.2	-6.5	-1.7
Manufacture of wood and of products of wood and cork, except furniture; manufacture of articles of straw and plaiting materials	C16	-0.2	-1.1	1.2	3.3	-5.9	9.1
Manufacture of paper and paper products	C17	-1.7	3.1	-1.7	0.7	1.5	-2.9
Printing and reproduction of recorded media	C18	1.3	-5.3	2.4	-2.6	1.2	-4.1
Manufacture of coke and refined petroleum products	C19
Manufacture of chemicals and chemical products	C20	-9.6	3.5	5.0	-5.0	-7.8	7.0
Manufacture of basic pharmaceutical products and pharmaceutical preparations	C21	14.6	-9.2	7.9	-0.5	-3.9	6.1
Manufacture of rubber and plastic products	C22	1.6	-3.2	-1.4	3.7	-3.0	6.1
Manufacture of other non-metallic mineral products	C23	-2.5	2.7	-0.8	1.8	-3.5	3.2
Manufacture of basic metals	C24	-3.0	9.1	-4.9	5.6	5.9	-0.2
Manufacture of fabricated metal products, except machinery and equipment	C25	-14.8	17.3	5.8	5.0	-8.6	-9.3
Manufacture of computer, electronic and optical products	C26	5.7	-5.8	5.4	15.6	-11.6	7.9
Manufacture of electrical equipment	C27	-3.0	-1.9	2.1	4.2	-0.1	12.2
Manufacture of machinery and equipment n.e.c.	C28	-1.7	-1.5	7.9	-2.3	-1.3	1.5
Manufacture of motor vehicles, trailers and semi-trailers	C29	-6.3	-0.5	-7.1	4.0	2.9	-8.3
Manufacture of other transport equipment	C30	-10.4	-22.6	-3.4	36.9	8.7	-15.8
Manufacture of furniture	C31	-7.9	3.6	5.5	4.7	4.3	-3.6
Other manufacturing	C32	-12.9	13.5	-13.3	11.9	7.1	-9.1
Repair and installation of machinery and equipment	C33	17.1	1.1	6.2	4.6	-22.4	11.9
Electricity, gas, steam and air conditioning supply	D	-6.6	-0.3	-14.6	15.8	10.1	-35.7
Electricity, gas, steam and air conditioning supply	D35	-6.6	-0.3	-14.6	15.8	10.1	-35.7
Seasonally adjusted.							
* Preliminary data.							
„..“ - Confidential data.							

Table 2

Changes of Industrial Production Indices compared to the same month of the previous year							
							(Per cent)
Economic activities	NACE.BG - 2008	VI.2025	VII.2025	VIII.2025	IX.2025	X.2025	XI.2025*
Industry	B_TO_E36	-8.3	-8.4	-9.0	-5.7	-7.5	-9.3
Mining and quarrying	B	26.7	2.1	-6.9	-18.9	-10.7	12.5
Mining of coal and lignite	B05	-35.1	-59.1	-53.9	-73.8	-17.0	-51.6
Extraction of crude petroleum and natural gas	B06
Mining of metal ores	B07	16.9	10.1	-2.5	-14.6	-10.9	27.1
Other mining and quarrying	B08	-16.2	-12.9	-8.1	-5.3	-16.5	-10.0
Mining support service activities	B09
Manufacturing	C	-7.3	-3.5	-5.0	-0.1	-6.2	-4.7
Manufacture of food products	C10	-14.1	-13.0	-13.0	-17.4	-21.9	-9.2
Manufacture of beverages	C11	-11.5	-15.0	-14.8	-13.9	-14.9	-0.8
Manufacture of tobacco products	C12	67.0	34.5	6.5	27.2	7.9	32.9
Manufacture of textiles	C13	-28.7	-10.5	-7.5	-33.2	-15.3	-6.8
Manufacture of wearing apparel	C14	-13.2	-21.2	-20.6	-20.3	-15.4	-23.9
Manufacture of leather and related products	C15	1.5	-9.0	0.8	18.0	-4.3	-6.3
Manufacture of wood and of products of wood and cork, except furniture; manufacture of articles of straw and plaiting materials	C16	-12.1	-12.0	-9.1	-11.9	-13.7	-7.9
Manufacture of paper and paper products	C17	-24.5	-25.8	-22.6	-25.6	-18.7	-20.2
Printing and reproduction of recorded media	C18	-4.7	-4.3	2.8	-7.8	-3.7	-10.5
Manufacture of coke and refined petroleum products	C19
Manufacture of chemicals and chemical products	C20	-24.2	-8.4	-11.4	-11.3	-14.4	-17.2
Manufacture of basic pharmaceutical products and pharmaceutical preparations	C21	14.8	0.9	1.3	15.8	-2.7	17.0
Manufacture of rubber and plastic products	C22	-3.6	-7.1	-8.5	-5.3	-6.4	-2.2
Manufacture of other non-metallic mineral products	C23	14.5	12.4	21.0	23.1	12.3	12.4
Manufacture of basic metals	C24	-41.3	-19.6	-19.6	-19.9	-8.4	-6.5
Manufacture of fabricated metal products, except machinery and equipment	C25	-3.6	3.4	2.5	18.6	-6.3	-10.6
Manufacture of computer, electronic and optical products	C26	6.7	-3.9	5.2	18.2	4.0	8.1
Manufacture of electrical equipment	C27	1.2	-2.9	-4.9	4.5	-1.4	14.0
Manufacture of machinery and equipment n.e.c.	C28	7.9	7.0	7.6	1.9	-1.2	8.2
Manufacture of motor vehicles, trailers and semi-trailers	C29	7.4	-1.2	-11.1	0.2	13.0	-3.8
Manufacture of other transport equipment	C30	-12.4	-29.3	-54.3	-8.6	-8.6	-17.7
Manufacture of furniture	C31	11.7	17.8	15.5	24.0	27.1	24.2
Other manufacturing	C32	-6.1	10.9	0.1	25.7	3.4	-0.6
Repair and installation of machinery and equipment	C33	3.2	7.1	14.4	10.1	-24.8	5.9
Electricity, gas, steam and air conditioning supply	D	-18.1	-35.0	-31.0	-25.0	-10.9	-43.7
Electricity, gas, steam and air conditioning supply	D35	-18.1	-35.0	-31.0	-25.0	-10.9	-43.7
Calendar-adjusted.							
* Preliminary data.							
„...“ - Confidential data.							

Table 3

Industrial Production Indices (Seasonally adjusted, 2021 = 100)													
NACE.BG - 2008	XI.2024	XII.2024	I.2025	II.2025	III.2025	IV.2025	V.2025	VI.2025	VII.2025	VIII.2025	IX.2025	X.2025	XI.2025*
B_TO_E36	100.8	98.6	96.5	96.0	91.2	92.7	93.4	91.6	91.6	91.9	94.5	92.3	90.7
B	87.2	105.4	85.1	79.8	84.3	83.1	83.9	97.3	86.4	93.9	89.9	78.2	96.2
B05	55.2	90.5	39.5	43.0	26.9	31.1	29.6	38.0	28.4	24.4	7.8	12.9	17.6
B06
B07	104.7	110.8	99.9	97.3	98.6	95.1	91.4	105.0	101.3	105.2	108.7	102.8	111.3
B08	86.3	79.0	85.6	67.2	73.2	77.6	76.2	73.5	76.6	79.5	76.5	71.1	76.9
B09
C	107.4	105.2	103.3	101.8	101.4	99.6	101.6	99.2	101.1	101.7	103.9	100.3	101.1
C10	100.6	99.5	95.6	88.6	89.4	90.9	91.6	88.8	89.9	89.6	85.2	84.5	89.9
C11	99.5	102.7	102.1	99.9	95.0	96.7	95.3	94.5	91.0	90.6	92.2	89.0	96.2
C12	66.2	75.6	86.5	92.3	91.2	116.3	102.2	99.2	92.6	87.9	103.6	85.5	90.4
C13	56.3	56.1	52.4	53.8	53.3	54.3	51.6	47.8	54.9	52.4	48.4	51.5	52.0
C14	92.8	77.9	78.4	77.6	74.0	76.9	72.5	77.8	71.2	70.3	70.6	73.7	69.8
C15	66.8	61.9	63.3	60.6	59.5	67.8	65.1	63.2	57.6	63.9	68.5	64.1	63.0
C16	91.5	92.0	89.9	86.7	84.6	82.4	78.7	78.5	77.6	78.6	81.1	76.3	83.3
C17	91.3	81.7	73.7	76.1	74.7	73.9	71.5	70.3	72.5	71.2	71.7	72.8	70.7
C18	94.5	91.4	90.9	88.1	93.5	90.6	91.9	93.0	88.1	90.2	87.8	88.9	85.3
C19
C20	109.9	101.9	97.4	94.0	93.5	91.7	98.5	89.1	92.2	96.8	91.9	84.8	90.7
C21	112.2	120.8	117.3	107.0	114.1	108.3	110.8	127.0	115.3	124.4	123.8	118.9	126.2
C22	86.3	85.3	81.5	80.7	81.6	82.1	79.7	81.0	78.4	77.3	80.2	77.8	82.5
C23	95.7	112.3	113.7	99.1	103.2	95.3	106.5	103.8	106.6	105.7	107.5	103.8	107.1
C24	90.5	71.7	72.3	74.6	75.0	72.5	72.9	70.8	77.2	73.4	77.6	82.1	82.0
C25	171.7	166.8	191.1	159.0	179.5	167.7	170.0	144.9	170.0	179.9	188.8	172.6	156.6
C26	111.6	108.7	92.1	107.7	121.1	99.7	102.6	108.4	102.2	107.6	124.4	109.9	118.6
C27	104.8	96.6	98.5	96.1	98.9	108.5	101.7	98.7	96.8	98.8	102.9	102.8	115.4
C28	89.6	93.1	93.4	98.2	100.7	93.5	94.8	93.2	91.8	99.0	96.7	95.5	97.0
C29	102.3	96.0	113.2	111.9	116.2	115.0	120.7	113.1	112.6	104.6	108.9	112.0	102.7
C30	99.2	105.5	104.1	123.5	83.3	105.4	98.0	87.8	68.0	65.7	89.9	97.7	82.3
C31	79.5	80.8	80.2	90.1	97.3	89.7	93.6	86.2	89.3	94.3	98.7	102.9	99.1
C32	121.8	133.5	110.7	132.9	112.9	131.2	130.5	113.6	128.9	111.8	125.1	134.0	121.7
C33	107.4	113.8	127.4	108.0	103.9	109.3	99.9	117.0	118.4	125.8	131.5	102.1	114.3
D	77.6	62.8	75.8	83.9	47.8	73.5	67.7	63.2	63.1	53.8	62.3	68.6	44.1
D35	77.6	62.8	75.8	83.9	47.8	73.5	67.7	63.2	63.1	53.8	62.3	68.6	44.1
* Preliminary data.													
*** - Confidential data.													

Table 4

Industrial Production Indices (Calendar-adjusted, 2021 = 100)													
NACE.BG - 2008	XI.2024	XII.2024	I.2025	II.2025	III.2025	IV.2025	V.2025	VI.2025	VII.2025	VIII.2025	IX.2025	X.2025	XI.2025*
B_TO_E36	104.9	101.7	90.8	90.7	91.8	89.1	89.1	92.9	94.4	89.7	96.8	98.1	95.1
B	92.5	119.3	82.6	75.1	81.8	75.5	76.8	93.9	82.5	94.2	96.9	85.5	104.0
B05	71.6	112.5	55.1	45.4	19.3	9.6	7.9	15.7	21.0	20.3	12.8	33.9	34.6
B06
B07	96.3	124.1	92.4	84.8	95.4	90.6	91.4	113.6	96.5	112.6	117.7	97.8	122.4
B08	96.1	78.6	62.8	52.7	69.6	76.1	79.2	78.6	80.5	83.5	81.4	79.9	86.5
B09
C	111.3	102.6	93.4	93.1	103.7	98.0	100.7	103.3	104.9	98.4	106.9	108.4	106.1
C10	103.4	103.0	87.3	77.0	88.7	87.6	90.3	89.2	89.8	91.2	88.2	93.4	93.9
C11	90.4	95.0	74.6	72.5	86.4	93.0	97.1	113.1	111.3	110.5	103.5	81.4	89.7
C12	64.3	73.8	52.9	63.4	96.4	127.3	119.4	121.1	118.1	90.2	114.6	89.0	85.5
C13	59.2	51.5	47.5	54.1	56.6	54.0	54.9	50.9	56.4	43.8	49.2	54.7	55.2
C14	95.5	73.8	80.9	77.3	72.4	69.7	65.5	85.0	80.4	65.6	69.3	78.2	72.7
C15	77.4	56.9	62.6	58.5	62.5	67.3	62.0	67.9	61.9	51.2	68.7	71.5	72.5
C16	97.6	86.3	76.1	77.4	85.6	82.7	81.7	82.0	82.3	75.9	84.1	81.0	89.9
C17	95.7	75.1	69.2	70.9	77.0	71.0	71.1	74.0	76.6	66.4	72.0	81.2	76.4
C18	107.0	96.9	81.8	79.5	95.6	89.1	92.0	97.1	86.8	83.4	84.2	95.2	95.8
C19
C20	112.4	100.9	91.7	89.2	101.8	92.7	97.8	91.5	93.0	92.7	90.8	85.0	93.0
C21	112.0	127.1	114.0	96.2	125.0	106.2	107.2	141.8	112.1	116.1	116.2	125.9	131.0
C22	88.0	77.4	74.7	75.5	84.6	81.8	79.2	85.5	81.7	72.3	82.9	84.1	86.1
C23	101.8	103.3	84.9	83.3	103.3	96.1	112.9	109.0	115.6	108.7	113.1	113.7	114.4
C24	92.8	65.1	70.9	71.9	80.3	73.1	75.6	72.4	78.2	66.8	76.5	89.6	86.8
C25	189.1	173.3	153.8	139.7	180.7	169.5	166.6	147.3	182.9	177.7	192.5	184.0	169.1
C26	116.6	104.3	85.5	104.7	127.9	96.8	98.7	114.5	104.8	94.5	128.3	122.1	126.1
C27	112.3	86.6	91.6	95.9	102.5	107.9	95.5	106.1	100.2	91.4	105.8	108.7	128.0
C28	94.1	89.5	83.7	95.5	107.7	94.7	92.9	98.1	93.6	87.7	98.5	103.5	101.8
C29	114.2	84.9	115.7	114.9	125.6	114.9	119.4	116.5	106.6	92.1	108.1	119.4	109.8
C30	97.1	89.7	81.5	124.3	81.7	110.4	98.0	91.3	62.9	59.4	88.7	112.8	79.9
C31	84.5	81.6	70.2	83.9	103.1	87.9	93.6	90.7	91.8	89.8	99.7	111.9	104.9
C32	130.0	122.4	95.2	117.3	113.2	127.5	129.1	129.0	130.5	110.0	130.3	149.0	129.2
C33	117.3	150.2	94.3	92.0	103.3	99.3	93.6	120.6	120.0	123.3	141.0	106.5	124.2
D	86.8	81.8	87.2	90.7	53.4	63.4	51.3	52.4	59.8	52.6	58.0	65.8	48.9
D35	86.8	81.8	87.2	90.7	53.4	63.4	51.3	52.4	59.8	52.6	58.0	65.8	48.9
* Preliminary data.													
„...“ - Confidential data.													